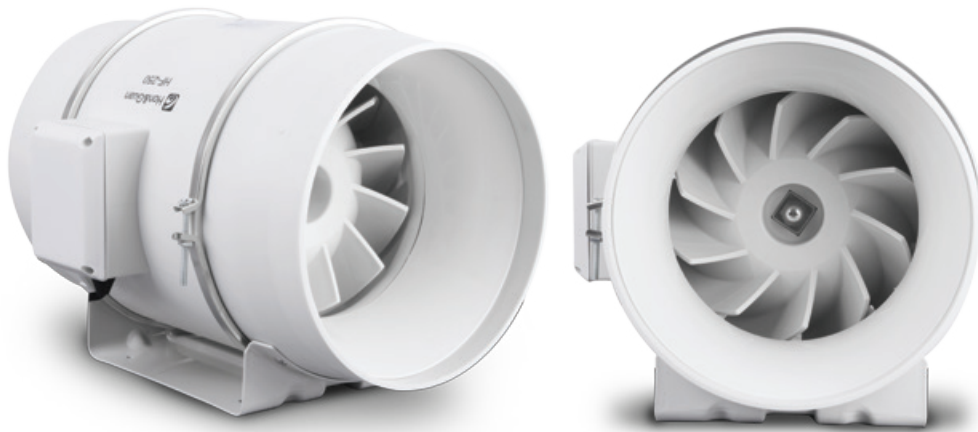




# HF SERIES MIXED FLOW INLINE AXIALS



Extremely quiet and efficient, the Leopard Fans Inline Mixed Flow Fans are suitable for many applications where noise is an issue, including bathrooms, offices, kitchens, toilet exhausts, gyms, waiting rooms, hydroponics and home heat transfers.

## Performance



Model	Speed	Voltage (V)	Current (A)	Power (W)	Speed (RPM)	Airflow <sup>1</sup> (L/s)	Max Pressure <sup>2</sup> (Pa)	dB(A) @ 3m
HF-100	High	240V/50Hz	0.12	26	2200	56	156	31
	Low		0.11	23	1850	50	131	26
HF-125	High	240V/50Hz	0.14	33	2250	78	159	31
	Low		0.13	28	1850	68	106	26
HF-150	High	240V/50Hz	0.24	54	2250	149	300	33
	Low		0.21	48	1850	114	240	29
HF-200	High	240V/50Hz	0.57	162	2250	233	352	63
	Low		0.52	128	1850	191	274	55
HF-250	High	240V/50Hz	1.2	225	2450	390	488	66
	Low		0.75	165	1850	296	371	58
HF-315	High	240V/50Hz	1.9	390	2350	613	693	69
	Low		1.4	275	1650	486	435	61

1. Airflow at Free Air  
2. Maximum Pressure

## Applications

- Kitchens
- Bathrooms
- Apartments
- Laundries
- Commercial
- Ensuites
- Offices

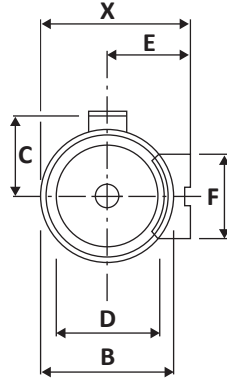
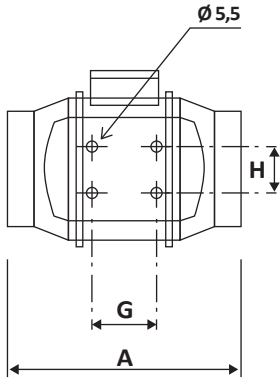
## Features

- IP44 motor protection as standard
- Operating Range -20 to +60 degrees
- Polypropylene casing with ABS plastic impellor



Fully approved and compliant to current ACMA regulations for use in residential premises

# Dimensions



MODEL	X	A	B	C	D	E	F	G	H
HF-100	188	303	176	115	97	100	90	80	60
HF-125	188	258	176	115	123	100	90	80	60
HF-150	212	320	200	127	147	112	130	80	60
HF-200	248	302	217	141	197	124	140	100	94
HF-250	310	383	259	-	247	-	-	150	150
HF-315	357	446	324	-	312	-	-	181	178

# Performance Curves

